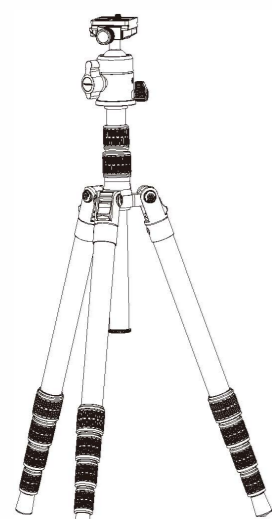
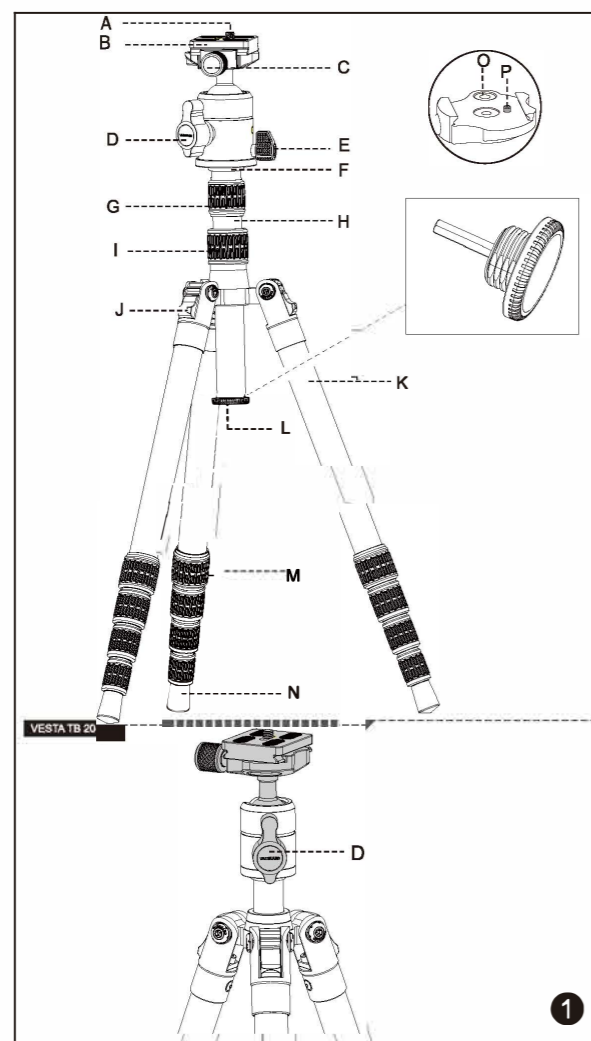


VESTA TB 204AB
VESTA TB 204ABS
VESTA TB 204CB



VESTA TB 235AB
VESTA TB 235CB



English

Thank you for purchasing a VANGUARD product.

① PART DESCRIPTION

- A: 1/4"-20 Camera Screw
- B: Quick Shoe (QS-64)
- C: Quick Shoe Lock Knob
- D: Central Ball Head Lock Knob
- E: Panning Lock Knob
- F: Anti-Shock Rubber Ring
- G: Second Section Central Column Lock Knob
- H: Central Column
- I: First Section Central Column Lock Knob
- J: Leg Angle Adjustment Button
- K: Legs
- L: Central Column End Cap
- M: Twist Locks
- N: Rubber Feet
- O: Bubble Level
- P: Quick Shoe Safety Pin

② REMOVING THE QUICK SHOE

Turn quick shoe lock knob (C) counterclockwise as shown until the quick shoe is released and then you can remove, as shown in fig. 2.

③ ATTACH THE QUICK SHOE TO YOUR CAMERA

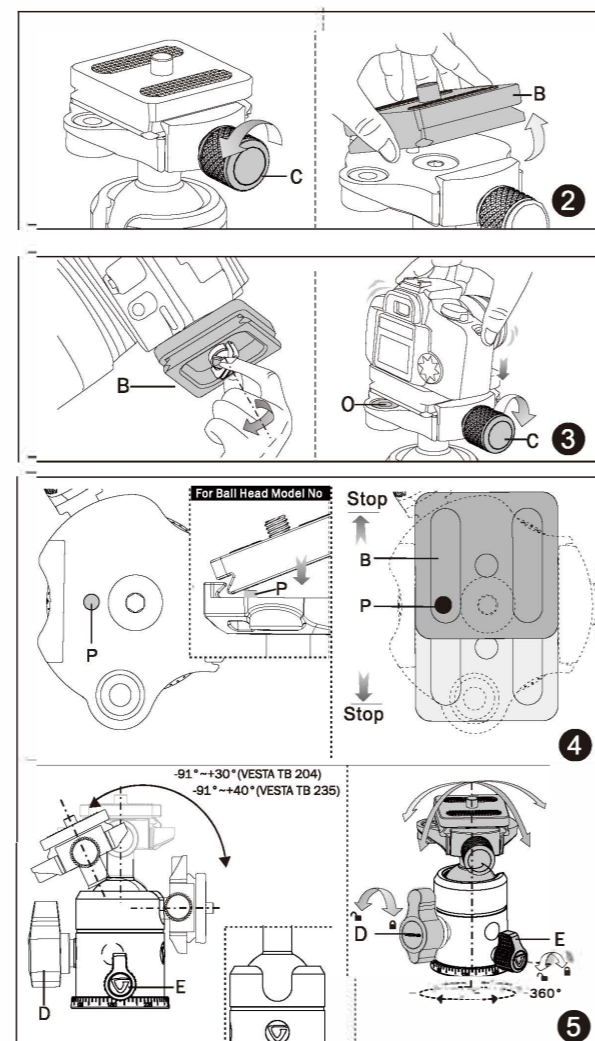
Line up the camera screw with your camera and insert. The quick shoe is fitted with a D-ring screw. Turn the D-ring clockwise until fully tightened, then place the quick shoe (B) on the ball head as shown in figure 3.
Note: In order to make the best use of the bubble level, we recommend it faces the camera screen when mounting on the head, as shown in figure 3.

④ SAFETY PIN

The safety pin helps to prevent your camera or equipment from accidentally falling when it is being adjusted.

⑤ BALL HEAD MOVEMENT & LOCKED POSITION

The ball head can tilt $-91^{\circ}(\pm 1)$ to $+40^{\circ}(\pm 1)$.
Unlock the locking knob for tilting by turning (D) counterclockwise. Position camera at the desired angle. Lock (D) by turning clockwise. Unlock the panning locking knob (E) to achieve 360° panning. This panning function allows for perfectly accurate, 360-degree panoramic



English

photography and videography.

Note: tilting angle of VESTA TB 204 ball head is $-91^{\circ}(\pm 1)$ to $+30^{\circ}(\pm 1)$.

② ANTI-SHOCK RUBBER RING

The anti-shock rubber ring (F) protects your equipment from damage when the central column is lowered too quickly.

③ CENTRAL COLUMN ADJUSTMENT

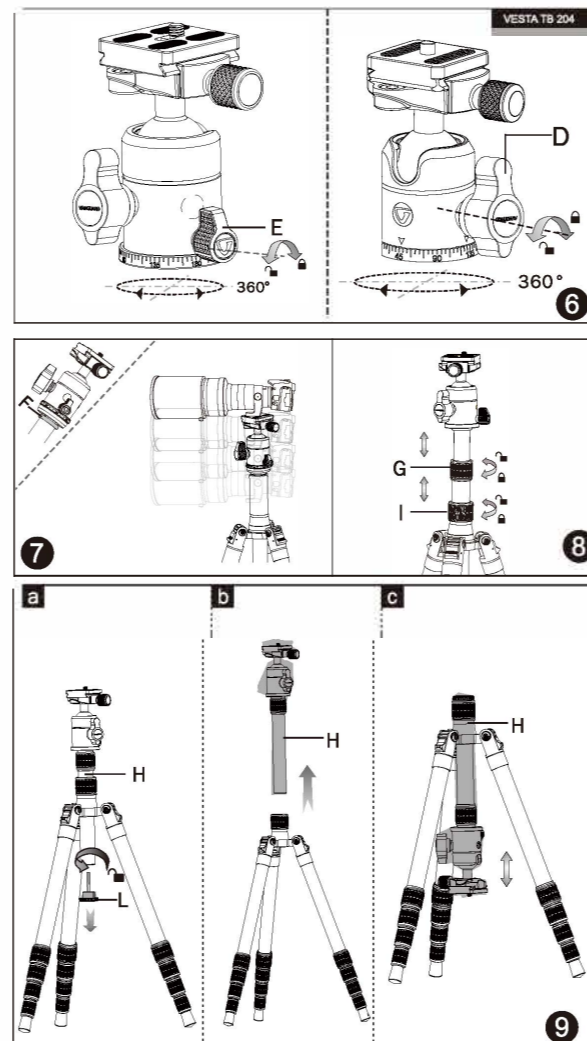
The central column of the tripod can be elevated to achieve the specific desired height for your equipment.
Release the first section central column lock knob (I) by turning counterclockwise to elevate the first section of the central column, lock by turning clockwise until it is fully tightened. If required, turn the second section central column lock knob (G) counterclockwise to release the second section of the central column, lock until tightened by turning clockwise.

④ QUICK FOLD CENTRAL COLUMN (QFCC SYSTEM)

Step 1) Loosen the central column end cap (L) by turning clockwise;
Step 2) Loosen the central column lock knob (I) by turning counterclockwise;
Step 3) Pull up the central column and insert the column from the bottom side of the canopy; lock the column by tightening the lock knob (I), then place the end cap (L) back onto the column, tighten in a clockwise direction. Make sure the central column is perfectly locked into position.
Warning: When using the QFCC system for Macro photography, please remove your camera while changing the column position to prevent any potential damage to your equipment.

⑤ LEG ANGLE ADJUSTMENT

a: Press the leg angle adjustment button (J) to adjust the legs to any of the three preset angles (20, 50 and 80 degrees). Legs can be adjusted individually for uneven terrain and can be set to have a more customized position.
b: When folding the legs upwards, press the leg angle adjustment button (J) until it is over the largest angle 80°, the legs can be completely folded up for compact for easy carrying.
Warning: When folding up the legs, please remove your camera to prevent any damage to your equipment



English

⑥ To ensure maximum compactness and folding of your tripod for transporting please pay attention to the position of the head (as shown in figure 11).

⑦ ⑧ LEG EXTENSION ADJUSTMENT

To adjust the height of the legs, each one has a telescopic section that can be extended by releasing the lock (M).
Step 1) Open the legs.
Step 2) Release the leg sections successively by unlocking the leg locks (M). Always start from the top down (thinnest section last) to reach the desired height. Using the larger leg section first will make your tripod more stable, as shown (fig.13).
Step 3) Lock (M) tightened until reaching the desired height.
Step 4) Proceed in the same way with the two other legs and make sure all locks (M) are perfectly tightened to prevent the tripod from accidentally falling.

⑨ Attention: The correct grip position (as shown in figure 14).

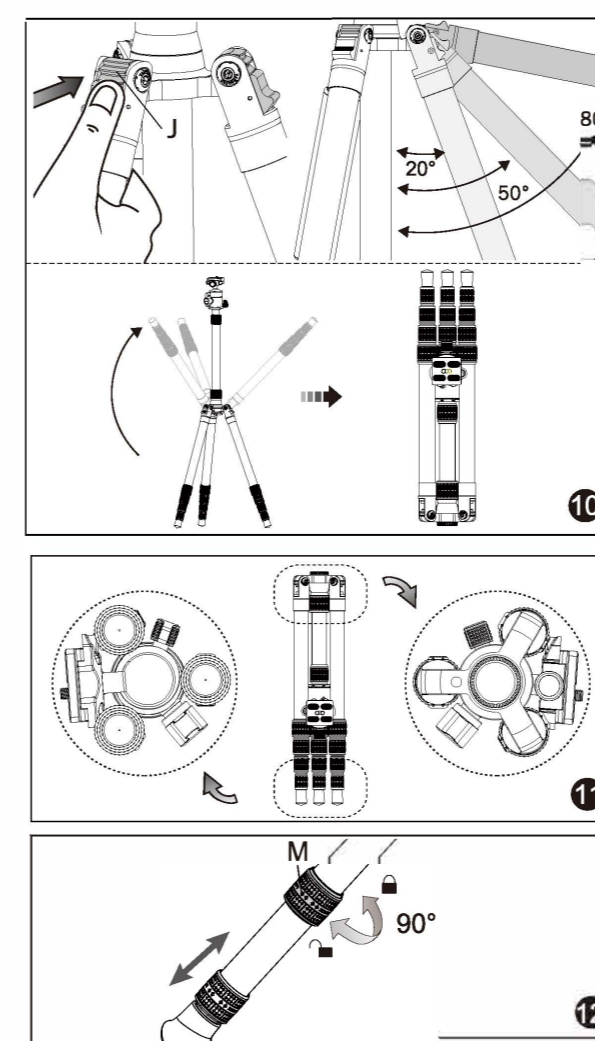
⑩ Attention: When adjusting the central column height, always start from the first section (larger central column section) to make your tripod more stable (as shown in figure 15).

⑪ LOOSE LEG

The central column end cap (L) can be used as an Allen wrench. If by chance or over time a leg becomes loose, turn clockwise the central column end cap (L) and use the wrench side to tighten the bolts near the top of the spider cast (canopy). (Fig. 16)

Notes before use:

1. Following the set-up of the tripod, confirm all legs are spread open and locked before mounting your camera. Failure to do so may cause the tripod to fall and your equipment to be damaged.
2. Always comply with the weight restrictions. Going over the maximum load capacity may cause damage to equipment or personal injury.
3. Ensure all individual knobs and locks are tight to avoid movement, as movement may result in equipment damage or personal injury.
4. Carefully hold camera equipment stable when removing it from the tripod.
5. Carrying your tripod:

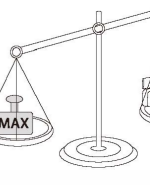
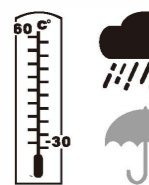
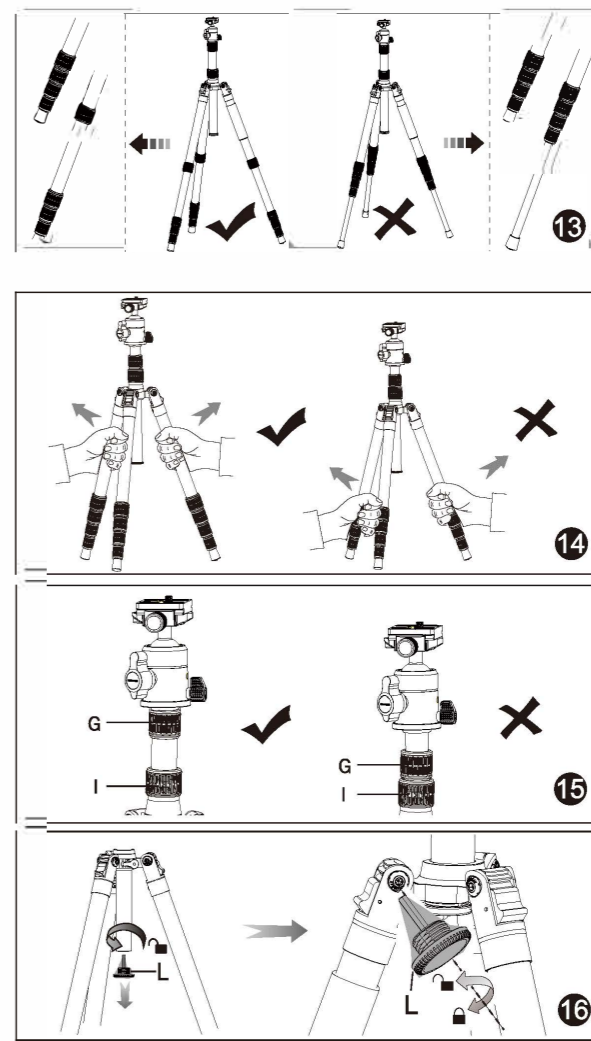


English

a) After use, remove the camera; fold the tripod completely; and ensure the tripod handle faces out when folding.
b) DO NOT carry the tripod when the camera is still mounted.

6. Cleaning your tripod:

- a) When necessary, wipe tripod with a soft cloth and if required use a mild detergent.
- b) When used around salt water, first flush with fresh water, then wipe with a dry soft cloth.



VANGUARD



www.vanguardworld.com